



CIMview360

CYLINDRICAL PRODUCTS VISION INSPECTION AND VERIFICATION

NON-CONTACT... HIGH SPEED... UP to 1,200 ppm

NON CONTACT
INSPECTION

NO COMPLEX
HANDLING

SUPER FAST
UP TO
1200 ppm

READING
1D and 2D
BARCODES

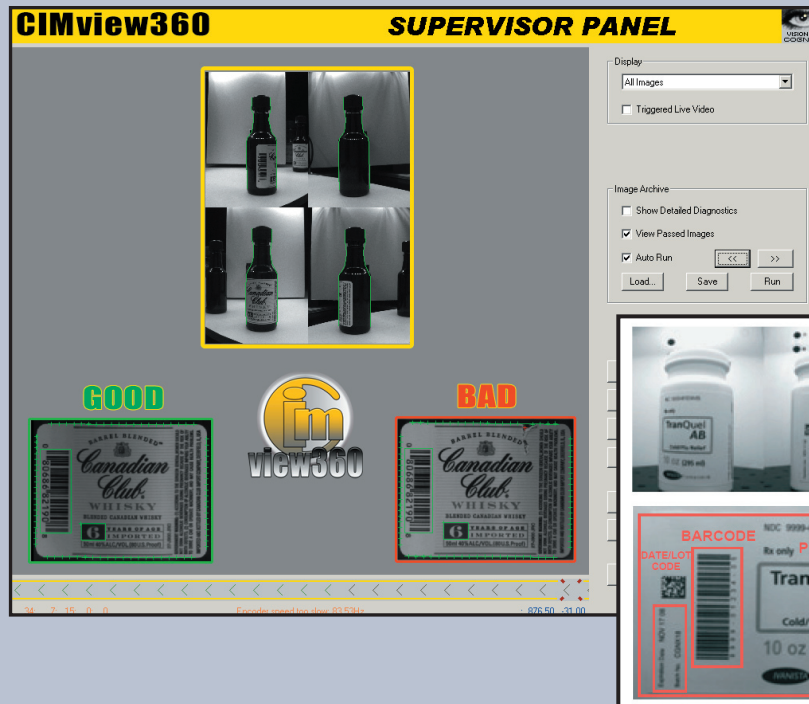
VERIFYING
DATE/LOT CODE
OCR and OCV

REDUCING SCRAP

DETECTING TORN
OR MISSING
LABELS

VERIFYING
PRINT QUALITY

ENHANCING
BRAND
IMAGE



“Accurate Inspection of Randomly Oriented Cylindrical Surfaces”

Cylindrical surfaces of three-dimensional products such as bottles, vials and cosmetic containers are difficult to inspect. Cameras often cannot be placed in the ideal locations, the part may have unknown orientation, or the surface to inspect may span multiple camera views. The **CIMview360** Cylindrical Product Inspection System solves these problems.

This system uses images acquired from one or more cameras, and combines those images to create a seamless and undistorted image of an object surface. As long as a feature of interest appears in one or more of the physical camera images, it can be inspected.

Based on **COGNEX**, leading and proven Machine Vision Technology, **CIMview360** completely eliminates the complex and expensive requirement to mechanically spin parts in order to inspect them. This reduces production line complexity, lowers costs, and increases production speed.

CIMview360 even compensates for rotation, tilt, uneven lighting, and perspective distortion ... the factory floor problems that exist in the manufacturing process.

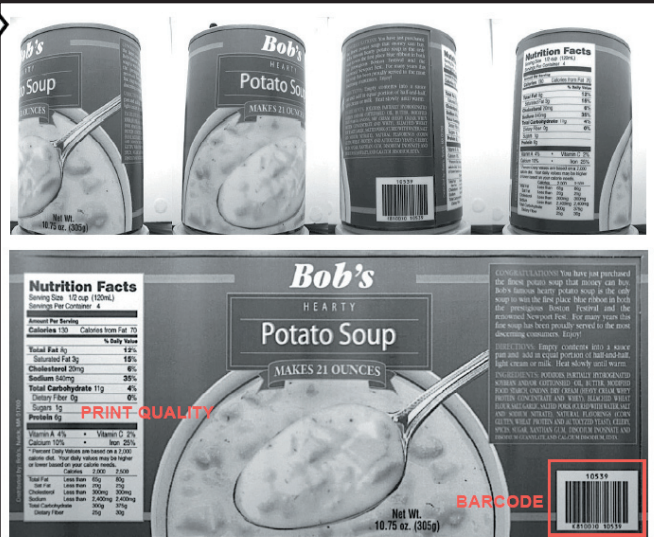
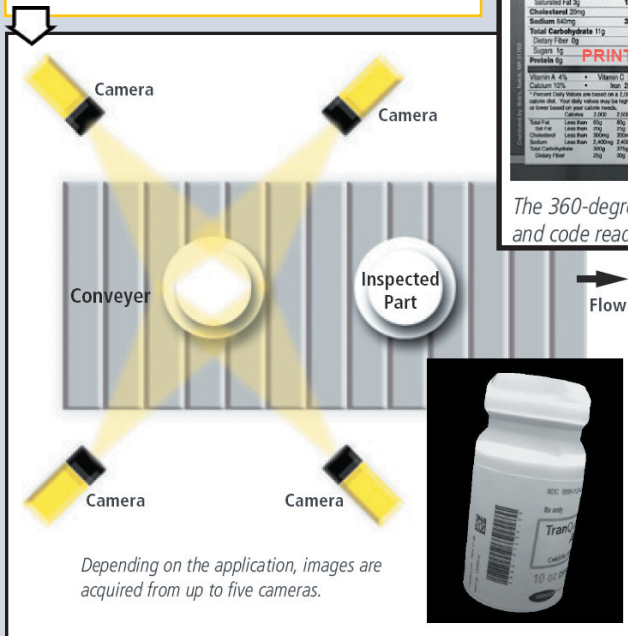
CIMview360



CYLINDRICAL PRODUCTS VISION INSPECTION AND VERIFICATION...

Four Camera Images... Stitched into
ONE Single Fully Indexed Image

Basic Four Body Camera Setup
can be equipped with Fifth - Top Camera
... in which case the overall Inspection
is based on Relative Positions of
ALL acquired images...



The 360-degree virtual image of cans and bottles facilitates label inspection
and code reading.

Complete Hardware and Software System Solution... from CODE-IN-MOTION

CIMview360 system facilitates
traceability and performs extensive product
quality checks on cylindrical food, beverage,
pharmaceutical, and many other products.
Packaging flexibility, food safety, productivity,
and quality control all benefit from the simplified
360-degree product inspection

NON CONTACT
INSPECTION

NO COMPLEX
HANDLING

SUPER FAST
UP TO
1200 ppm

READING
1D and 2D
BARCODES

VERIFYING
DATE/LOT CODE
OCR and OCV

REDUCING SCRAP

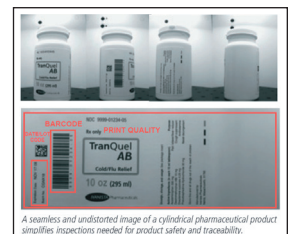
DETECTING TORN
OR MISSING
LABELS

VERIFYING
PRINT QUALITY

ENHANCING
BRAND
IMAGE

Some of the many **CIMview360** applications and benefits:

- **Confirming package/product match** ... lowering the risk of a recall
- **Reducing scrap** ... by detecting wrong or mislabeled products early in the production process
- **Checking for torn or missing label** ... critical to the packaging process
- **Reading 1D and 2D codes** ... enables products to be tracked and traced through manufacturing
- **Verifying label printing integrity** ... to ensure a positive brand image on store shelves
- **Detecting damaged products** ... that result from operations such as cartoning
- **Checking date code presence** ... ensuring that coding printers are functioning properly
- **Performing date/lot code OCR and OCV** ... verifies that product information is correctly printed and that labels are placed onto the right products
- **Checking for roundness** ... for enhanced brand image
- **Gauging** ... without a telecentric lens



code-in-motion LLC is a COGNEX PSI (Partner System Integrator)... with EXCLUSIVE rights to Sell and Integrate 360 Inspection
Software... (one of seven authorized companies in the USA)



code-in-motion LLC
4 Faraday, Irvine CA 92618
phone: 949.361.CODE (2633) - fax: 949.361.2636
www.code-in-motion.com